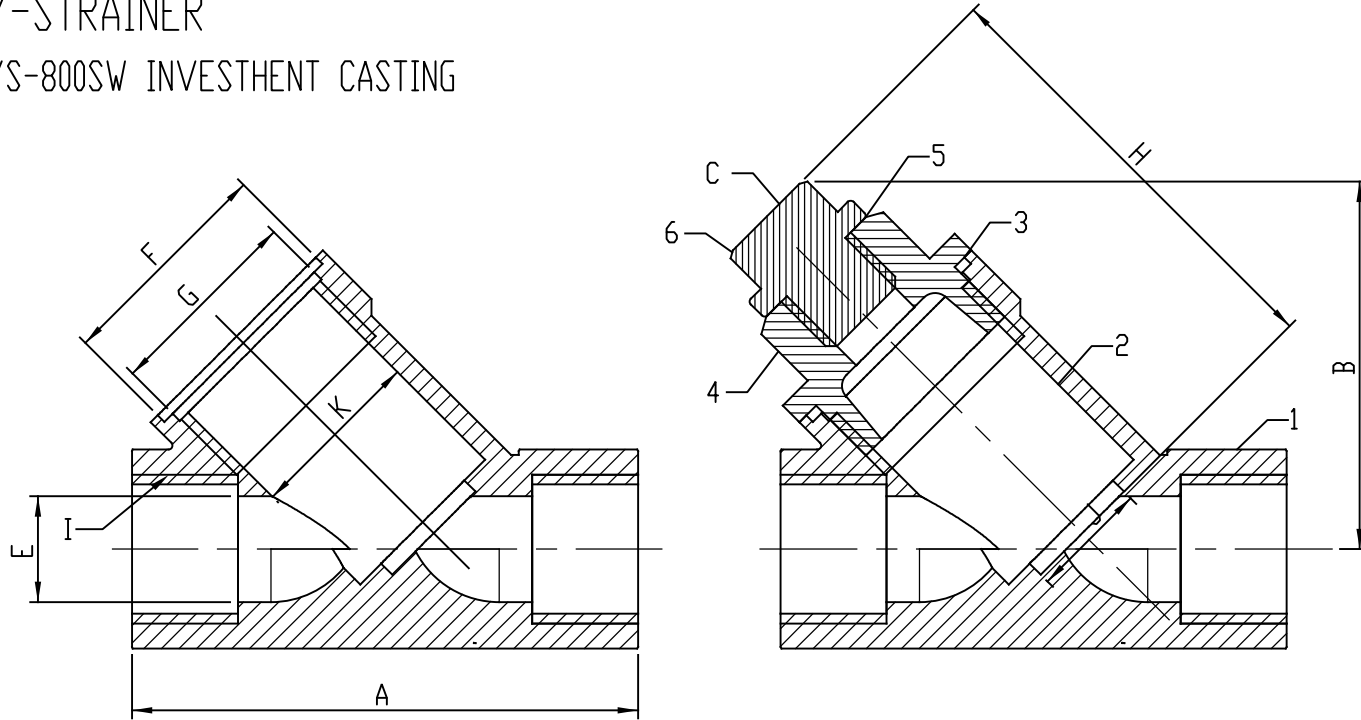


Fig NO. : YS-800SW

Y-STRAINER
YS-800SW INVESTMENT CASTING



NO.	PARTS	MATERIAL
1	BODY	ASTM-A315-CF8M (1.4408)
2	SCREEN	AISI316 (20 MESH)
3	SEAL	TEFLON (PTFE)
4	CAP	ASTM-A351-CF8M (1.4408)
5	SEAL	TEFLON (PTFE)
6	PLUG	ASTM A-351-CF8M

SIZE	A	B	C	E	F	G	H	I	J	K	WEIGHT(LBS)
1/4"	2.539	1.624	1/4" NPT	0.689	1.122	1.004	1.476	SW	0.591	0.886	0.653
3/8"											0.558
1/2"											0.527
3/4"	3.130	1.987	1/2" NPT	0.925	1.319	1.201	1.890	SW	0.787	1.102	0.873
1"	3.543	2.610		1.142	1.701	1.575	2.323		0.984	1.457	1.627
1-1/4"	4.075	2.803		1.417	1.795	1.673	2.520		1.280	1.575	1.889
1-1/2"	4.685	3.169		1.693	2.126	1.988	2.874		1.575	1.890	2.718
2"	5.453	3.774		2.126	2.520	2.402	3.386		1.969	2.264	4.385
2-1/2"	7.244	4.809		2.677	3.354	3.268	4.488		2.480	2.953	10.536
3"	7.953	5.498		3.228	4.024	3.858	4.882		3.150	3.386	14.756

Note : 1. Operating Pressure CLASS 800 = 1920 PSI
 2. Y-STRAINER max working temperature:
 Constantly temperature = 212 ° F
 Flash high temperature = 500 ° F

項目 ITEM	更改內容 DESCRIPTION	日期 DATE	更改者 CHK	確認者 APP	名稱 DWGNAME	Y-STRAINER ALL SIZE	品號 DWG NO.	034-E108(YS-800SW)	單位 UNIT	inch	製圖 DWN	SAMMI
							一般公差 TOL.	0.5-6 ± 0.05	6-30 ± 0.1	30-120 ± 0.15	120-400 ± 0.2	400-1000 ± 0.3
					JFW INDUSTRIES INC		角度 ANG. TOL.	± 0.5°	比例 SCALE	----	審核 CHK	
							材料 MATERIAL		版本 REV.	01	核准 APP	
											日期 DATE	109.04.20