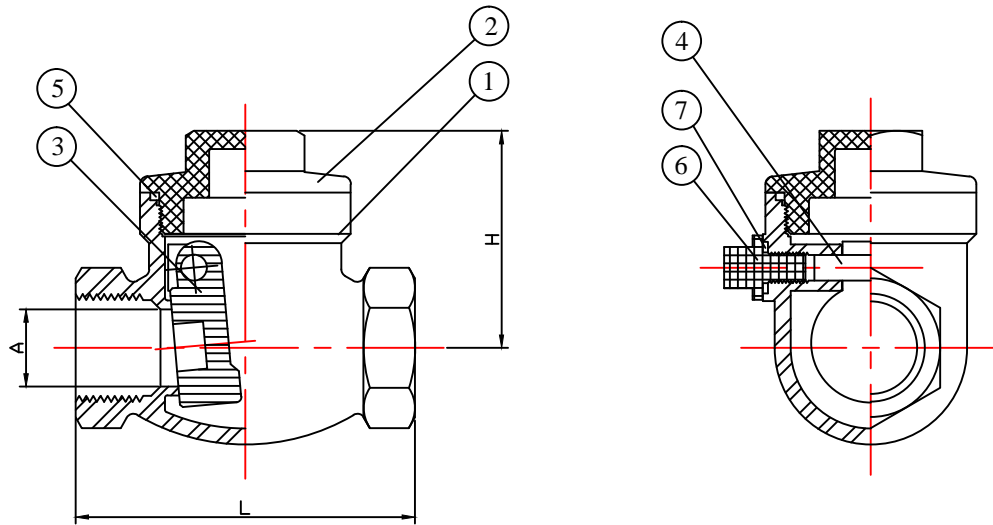


REVISE	DATE	APPROVED	REVISE	DATE	APPROVED



SIZE	1/4"	3/8"	1/2"	3/4"	1"	1-1/4"	1-1/2"	2"	2-1/2"	3"
A	0.433	0.551	0.591	0.787	0.984	1.26	1.575	1.874	2.559	3.15
H	1.654	1.654	1.654	2.008	2.362	2.638	2.953	3.189	3.661	4.094
L	2.559	2.559	2.559	3.15	3.543	4.134	4.724	5.512	7.087	7.874
W(LB)	0.79	0.73	0.68	0.93	1.46	2.25	3.17	4.72	8.82	13.01
CV	2.56	2.56	4.55	10.64	19.72	31.5	46.42	86.77	139.29	200.58

NO.	DESCRIPTION	MATERIAL	Q'TY
1	BODY	CF8M	1
2	COVER	CF8M	1
3	DISC	CF8M	1
4	HANGER PIN	SUS316	1
5	GASKET	TEFLON	1
6	PLUG	SUS316	1
7	PLUG GASKET	TEFLON	1

TOLERANCE						DRAWING NO.
0.5~6	6~30	30~120	120~315	315~1000	1000~	DESCRIPTION
±0.1	±0.2	±0.3	±0.5	±0.8	±1.2	
APPROVED BY		DRAWN BY		MATERIAL		SC-200
		SAMMI				
		9,20,'23		SCALE:FREE		
						JFW INDUSTRIES INC