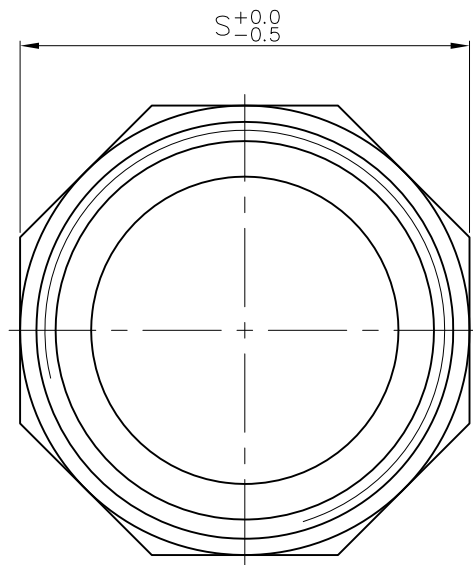


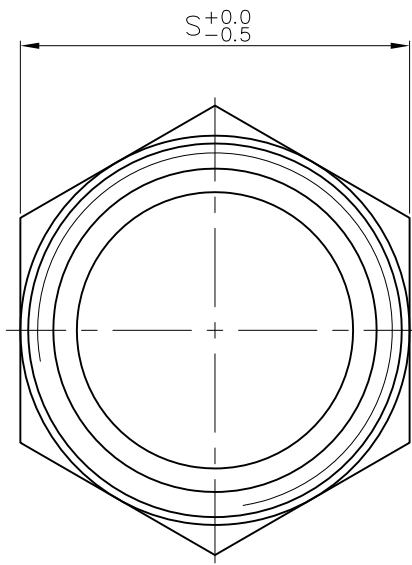
Ra  
 0.2  
 1.6  
 6.3  
 25  
 JIS

± 0.1  
 ± 0.2  
 ± 0.3  
 ± 0.5  
 ± 0.8  
 GENERAL TOLERANCE

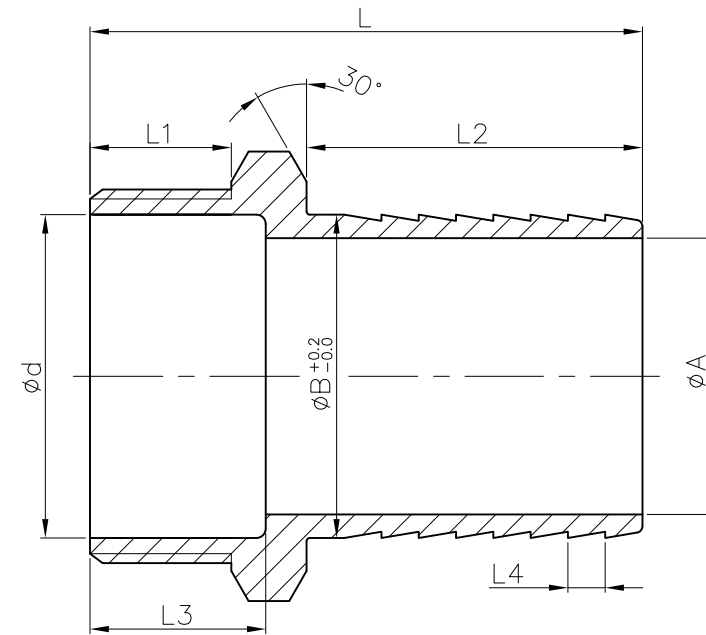
E-mail: jfwvalve@comcast.net  
 6731 N.E. 47TH PORTLAND, OREGON 97218 U.S.A.  
 Tel: 1 503 288 0673 Fax: 1 503 288 1075



2-1/2"-4"



1/2"-2"



SIZE	d		A		B		L		L1		L2		L3		L4		S	
	mm	in	mm	in	mm	in	mm	in	mm	in	mm	in	mm	in	mm	in	mm	in
1/2"	16	0.63	9	0.35	13	0.51	56.5	2.22	15.5	0.61	32.5	1.28	19	0.75	3.6	0.14	23	0.91
3/4"	21	0.83	15	0.59	20	0.79	60	2.36	15.5	0.61	34	1.34	21.5	0.85	3.8	0.15	28	1.1
1"	26	1.02	19.5	0.77	25.5	1	69	2.72	19	0.75	39	1.54	21	0.83	4.3	0.17	37	1.46
1-1/4"	34	1.34	26.5	1.04	32	1.26	70	2.76	22	0.87	37	1.46	28	1.1	4.1	0.16	45	1.77
1-1/2"	39.5	1.56	33.5	1.32	40	1.57	80	3.15	22	0.87	47.5	1.87	28	1.1	5.3	0.21	50	1.97
2"	51.5	2.03	44	1.73	51.5	2.03	88	3.46	22.5	0.89	53.5	2.11	28	1.1	5.9	0.23	62	2.44
2-1/2"	66.5	2.62	64	2.52	63.5	2.5	107	4.21	29	1.14	65	2.56	34	1.34	7.2	0.28	79	3.11
3"	78.5	3.09	68	2.68	76.5	3.01	114	4.49	31	1.22	68	2.68	33.5	1.32	7.5	0.3	91.5	3.6
4"	101.5	4	91	3.58	102	4.02	123	4.84	33.5	1.32	74	2.91	38.5	1.52	8.2	0.32	117	4.61

Tolerance: ±0.5mm (1/2"~2")  
 ±0.8mm (2-1/2"~4")

△			
△			
△			
Revise	Description	Date	Approve
DRAWING NO.		F08-0	
		-12	

JFW INDUSTRIES, INC.

CHECK BY	DRAWING BY	DATE	SPECIFICATION	Hex. King Nipple With More Barbs And Sharp
	<i>Dune</i>	May.07.2012	MATERIAL	304/316
			PROCESS/Nr.	
			UNIT / SCALE	mm

