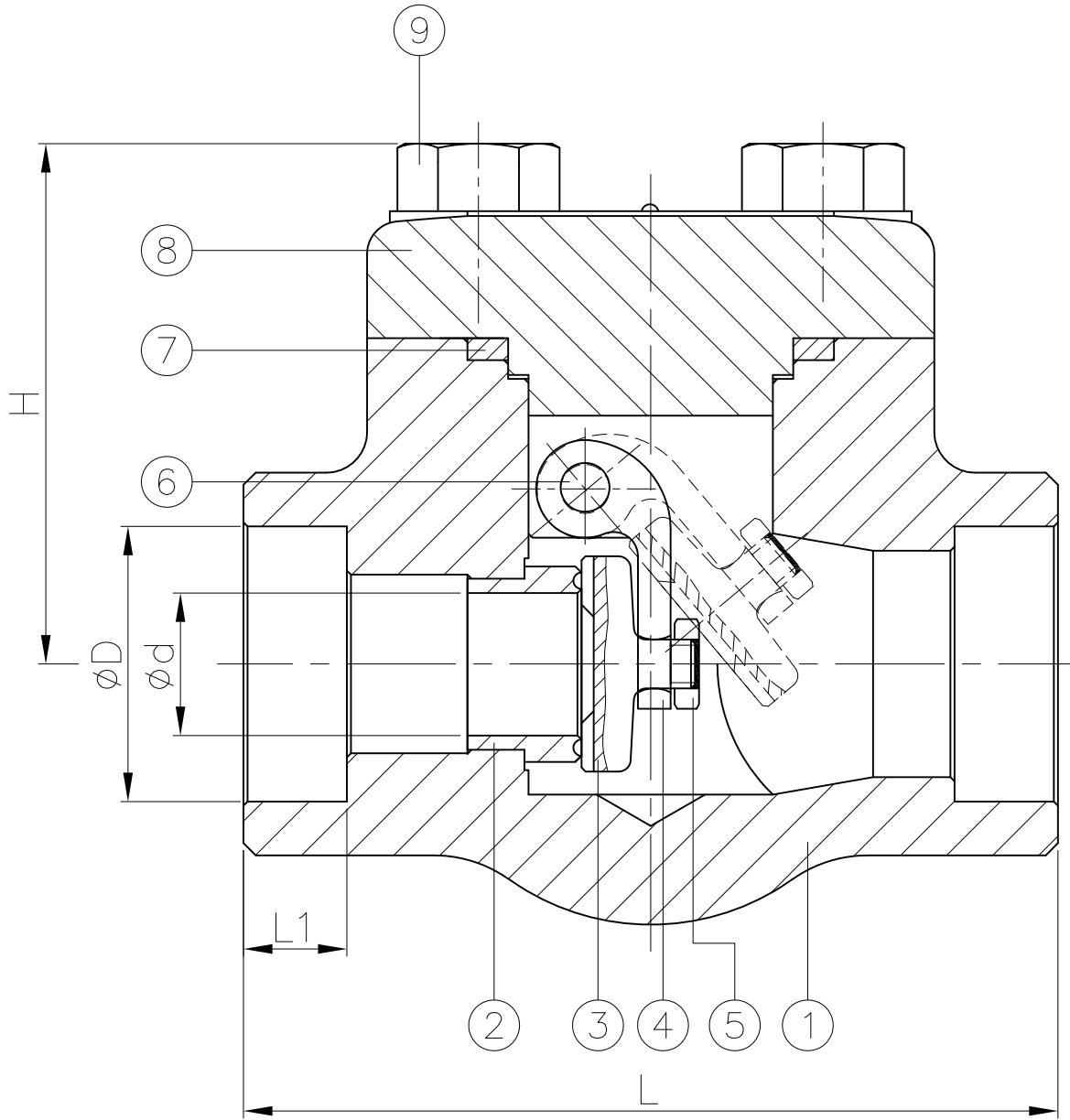


Ra	0.2	1.6	6.3	25	0.1	0.2	0.3	0.5	0.8
JIS	▽▽▽	▽▽	▽	▽	0.5~5	6~30	31~120	121~320	321~1000
GENERAL TOLERANCE	±0.1	±0.2	±0.3	±0.5	±0.1	±0.2	±0.3	±0.5	±0.8

JFW INDUSTRIES, INC.
 6731 N.E. 47TH PORTLAND, OREGON 97218 U.S.A.
 E-mail: jfwvalve@comcast.net
 Tel: 1 503 288 0673
 Fax: 1 503 288 1075



FEATURES :

- Design and manufacture according to: API 602
- Socket weld end according to: ASME B16.11
- Pressure-temperature according to: ASME B16.34
- Inspection and test according to: API 598
- The disc to be at 8 o'clock

DN	d	D	L	L1	H	Weight (kg)
15	9.5	21.8	73	9.6	53	1
20	13	27.1	80	12.7	56	1.2
25	17.5	33.8	100	12.7	65	2
32	24	42.7	114	12.7	80	3.2
40	29	48.8	120	12.7	90	4.3
50	36.5	61.2	130	15.9	105	6.2

unit:mm

NPS	d	D	L	L1	H	Weight (lb)
1/2"	0.37	0.86	2.87	0.38	2.09	2.2
3/4"	0.51	1.07	3.15	0.5	2.2	2.6
1"	0.69	1.33	3.94	0.5	2.56	4.5
1-1/4"	0.94	1.68	4.49	0.5	3.15	7.1
1-1/2"	1.14	1.92	4.72	0.5	3.54	9.5
2"	1.44	2.41	5.12	0.63	4.13	13.7

unit:in

SIZE	Cv (gallon/min)
1/2"	3
3/4"	8
1"	13
1-1/4"	20
1-1/2"	34
2"	58

ITEM	PARTS	MATERIAL
1	BODY	ASTM A182-F316
2	SEAT	ASTM A276-316
3	DISC	
4	HINGE	ASTM A351-CF8M
5	NUT	ASTM A194-8M
6	PIN	ASTM A276-316
7	GASKET	316+GRAPHITE
8	BONNET	ASTM A182-F316
9	BOLT	ASTM A193-B8M

△			
△	Add Cv	3/07/2016	Ray
△	Add weight	2/05/2016	Ray
Revise	Description	Date	Approve

JFW INDUSTRIES, INC.

CHECK BY	DRAWING BY	DATE	SPECIFICATION	Socket Weld End Swing Check Valve Class 800
	<i>Sammy</i>	Mar.07.2016	MATERIAL	F316
			PROCESS/Nr.	
			UNIT / SCALE	mm

DRAWING NO. **SC-800-SW -16A**