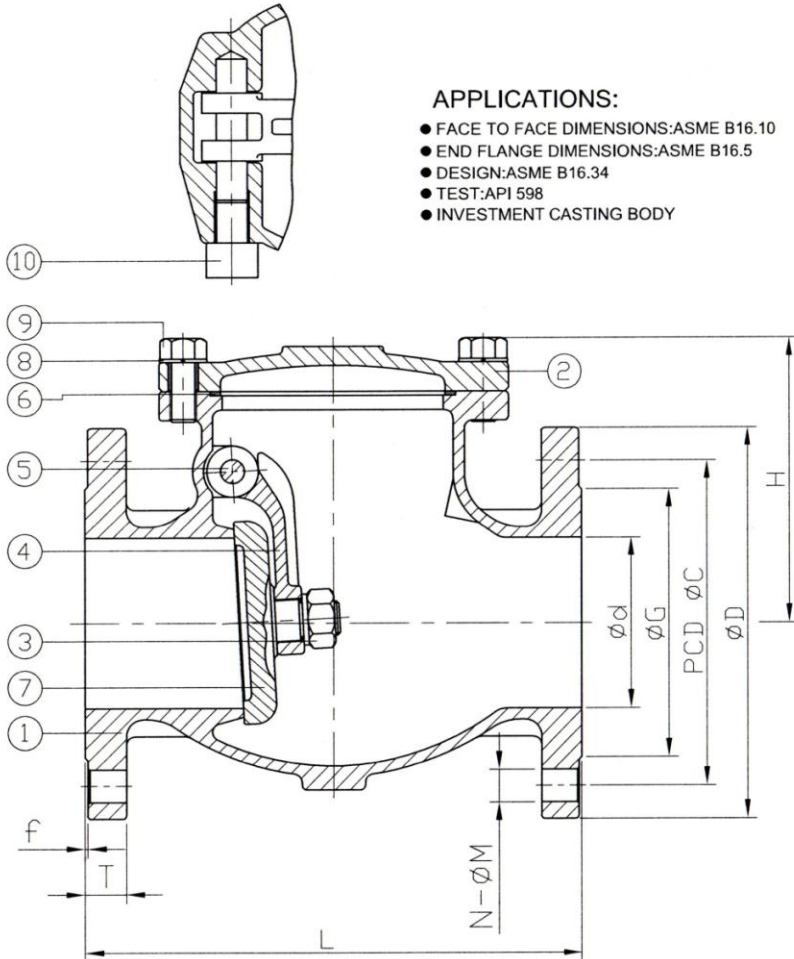


Ra	0.2	JIS
	1.6	
	6.3	
	25	

GENERAL TOLERANCE	±0.1
	±0.2
	±0.3
	±0.5
	±0.8

JFW INDUSTRIES, INC.
 6731 N.E. 47TH PORTLAND, OREGON 97218 U.S.A.
 E-mail: jfwvalve@comcast.net
 Tel: 1 503 288 0673
 Fax: 1 503 288 1075



- APPLICATIONS:**
- FACE TO FACE DIMENSIONS:ASME B16.10
 - END FLANGE DIMENSIONS:ASME B16.5
 - DESIGN:ASME B16.34
 - TEST:API 598
 - INVESTMENT CASTING BODY

DN	d	G	C	D	L	H	T	f	N	M	Weight (kg)
50	50	92	127	165	267	127	22.3	1.6	8	19	13.3
80	80	127	168	210	318	154	28.6	1.6	8	22	25.3
100	100	157	200	254	356	196	31.8	1.6	8	22	46
150	150	216	270	318	444	230	36.6	1.6	12	22	80.7
200	200	270	330	381	533	265	41.3	1.6	12	25	100

NPS	d	G	C	D	L	H	T	f	N	M	Weight (lb)
2"	1.97	3.62	5	6.5	10.51	5	0.88	0.06	8	0.75	29.4
3"	3.15	5	6.61	8.27	12.52	6.06	1.13	0.06	8	0.87	55.7
4"	3.94	6.18	7.87	10	14.02	7.72	1.25	0.06	8	0.87	101.3
6"	5.91	8.5	10.63	12.52	17.48	9.06	1.44	0.06	12	0.87	177.8
8"	7.87	10.63	12.99	15	20.98	10.43	1.63	0.06	12	0.98	220.5

ITEM	PARTS	MATERIAL
1	BODY	ASTM A351-CF8M
2	BONNET	
3	NUT	SUS 316
4	ARM HINGE	ASTM A351-CF8M
5	HINGE PIN	SUS 316
6	GASKET	PTFE
7	DISC	ASTM A351-CF8M
8	SPRING WASHER	SUS 304
9	BONNET BOLT	
10	BOLT	

JFW INDUSTRIES, INC.

CHECK BY	DRAWING BY	DATE	SPECIFICATION	Flanged End Swing Check Valve Class 300
	Jammy	Feb.23.2016	MATERIAL	CF8M
			PROCESS/Nr.	
			UNIT / SCALE	mm

△			
△	Add weight	02/23/2016	Ray
△	Revise	Description	Date Approve
DRAWING NO.		SC-300 - 16	