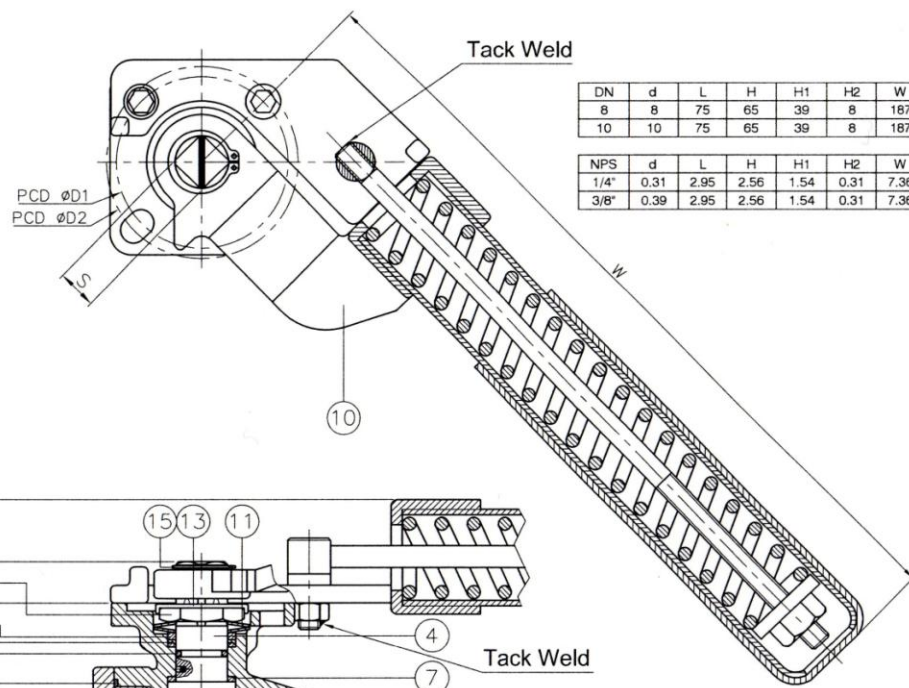
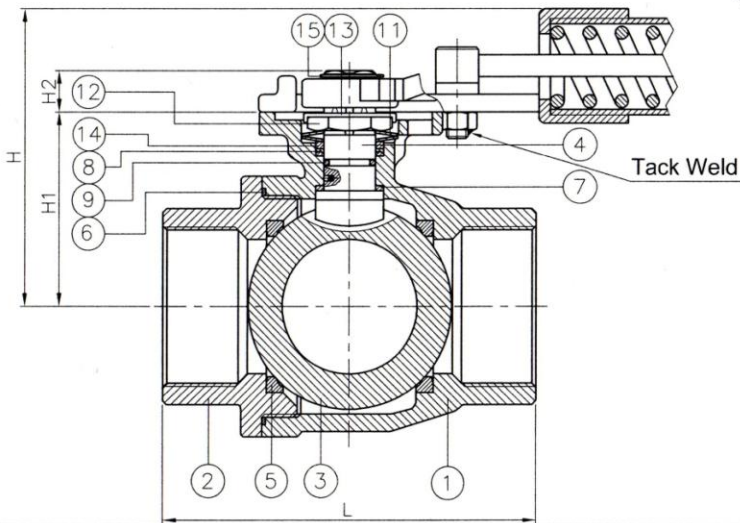


JIS Ra 0.2 1.5 6.3 25
 ±0.1 6-30 ±0.2 31-120 ±0.3 121-1000 ±0.8
 GENERAL TOLERANCE
 0.5-5 6-30 31-120 121-1000
 JFW INDUSTRIES, INC. E-mail: jfwvalve@comcast.net
 6731 N.E. 47TH PORTLAND, TEL: 1 503 288 0673
 OREGON 97218 U.S.A. FAX: 1 503 288 1075



DN	d	L	H	H1	H2	W	S	D1	D2	ISO 5211	SPRING HANDLE	Torque (N-m)	Weight (kg)
8	8	75	65	39	8	187	9	36	42	F03/F04	F03	7	0.8
10	10	75	65	39	8	187	9	36	42	F03/F04	F03	7	0.8

NPS	d	L	H	H1	H2	W	S	D1	D2	ISO 5211	SPRING HANDLE	Torque (in-lb)	Weight (lb)
1/4"	0.31	2.95	2.56	1.54	0.31	7.36	0.35	1.42	1.65	F03/F04	F03	62	1.8
3/8"	0.39	2.95	2.56	1.54	0.31	7.36	0.35	1.42	1.65	F03/F04	F03	62	1.8



ITEM	PARTS	MATERIAL
1	BODY	ASTM A351-CF8M
2	CAP	
3	BALL	
4	STEM	ASTM A276-316
5	SEAT	RTFE
6	GASKET	PTFE
7	THRUST WASHER	
8	PACKING	VITON
9	O-RING	
10	SPRING HANDLE B	ASTM A351-CF8
11	BELLEVILLEWASHER	AISI 301
12	STEN NUT	AISI 304
13	LOCK WASHER	
14	GLAND RING	
15	CIRCLIPS FOR SHAFT	

JFW INDUSTRIES, INC.

CHECK BY	DRAWING BY	DATE	SPECIFICATION	2-PC Screwed End Ball Valve 1000 WOG
	Jammy	Feb.04.2016	MATERIAL	CF8M
			PROCESS/Nr.	
			UNIT / SCALE	mm

△			
△			
△	Add weight	2/04/2016	Ray
Revise	Description	Date	Approve
DRAWING NO. BV-002-SR - 16			