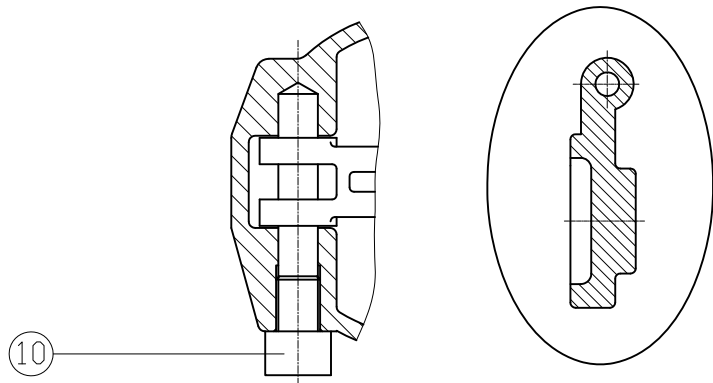


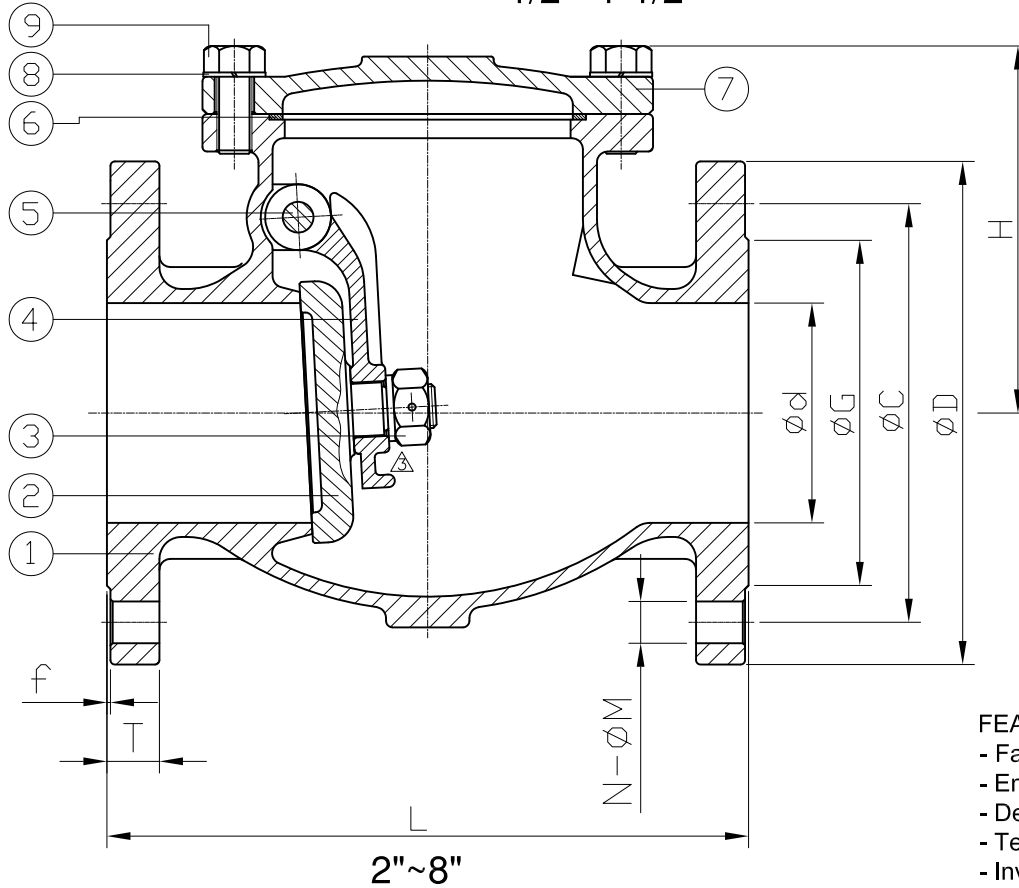
JFW INDUSTRIES, INC.  
 6731 N.E. 47TH PORTLAND,  
 OREGON 97218 U.S.A.  
 E-mail: jfwvalve@comcast.net  
 Tel: 1 503 288 0673  
 Fax: 1 503 288 1075



1/2"~1-1/2"

NPS	d	G	C	D	L	H	T	f	N	M	Weight (lb)
1/2"	0.59	1.38	2.62	3.74	5.98	2.4	0.56	0.06	4	0.63	5.7
3/4"	0.79	1.69	3.25	4.61	7.01	2.4	0.63	0.06	4	0.75	7.8
1"	0.98	2.01	3.5	4.88	7.99	3.11	0.69	0.06	4	0.75	11.7
1-1/2"	1.57	2.87	4.51	6.14	9.49	3.66	0.81	0.06	4	0.87	21.4
2"	1.97	3.62	5	6.5	10.51	5	0.88	0.06	8	0.75	31.5
2-1/2"	2.56	4.13	5.87	7.48	11.5	5.67	1	0.06	8	0.87	44.8
3"	3.15	5	6.61	8.27	12.52	6.06	1.13	0.06	8	0.87	55.7
4"	3.94	6.18	7.87	10	14.02	7.72	1.25	0.06	8	0.87	101.3
5"	4.92	7.32	9.25	10.98	15.75	8.54	1.38	0.06	8	0.87	-
6"	5.91	8.5	10.63	12.52	17.48	9.06	1.44	0.06	12	0.87	177.8
8"	7.87	10.63	12.99	15	20.98	10.43	1.63	0.06	12	0.98	220.5

unit:in



SIZE	Cv (USgal/min)
1/2"	21
3/4"	37
1"	48
1-1/2"	55
2"	76
2-1/2"	108
3"	149
4"	280
5"	378
6"	480
8"	770

ITEM	PARTS	MATERIAL
1	BODY	ASTM A351-CF8M
2	BONNET	
3	NUT	SUS 316
4	ARM HINGE	ASTM A351-CF8M
5	HINGE PIN	SUS 316
6	GASKET	304+GRAPHITE
7	DISC	ASTM A351-CF8M
8	SPRING WASHER	SUS 304
9	BONNET BOLT	
10	BOLT	

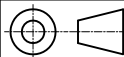
FEATURES :

- Face to face dimension : ASME B16.10
- End flange dimensions : ASME B16.5
- Design : ASME B16.34
- Test : API 598
- Investment casting body

△	Add dimension & Cv,remove DN dimension,revise material,drawing,weight	08/10/2022	Ray
△	Add Cv	03/09/2016	Ray
△	Add weight	02/23/2016	Ray
Revise	Description	Date	Approve

JFW INDUSTRIES, INC.

CHECK BY	DRAWING BY	DATE	SPECIFICATION	Flanged End Swing Check Valve Class 300
	Yuan	Aug.10.2022	MATERIAL	CF8M
			PROCESS/Nr.	
			UNIT / SCALE	mm



DRAWING NO. **SC-300**