

NPS	d	L	H	H1	W	S	D1	D2	ISO 5211	SPRING HANDLE	Torque (in-lb)	Weight (lb)
1/4"	0.31	2.95	2.56	1.54	7.36	0.35	1.42	1.65	F03/F04	F03	62	1.8
3/8"	0.39	2.95	2.56	1.54	7.36	0.35	1.42	1.65	F03/F04	F03	62	1.8

SIZE	Cv
	(gallon/min)
1/4"	10
3/8"	16

ITEM	PARTS	MATERIAL
1	BODY	ASTM A351-CF8M
2	CAP	
3	BALL	
4	STEM	ASTM A276-316
5	SEAT	RTFE
6	GASKET	PTFE
7	THRUST WASHER	
8	PACKING	VITON
9	O-RING	
10	BELLEVILLEWASHER	AISI 301
11	STEM NUT	AISI 304
12	LOCK WASHER	
13	GLAND RING	
14	HANDLE HEAD	ASTM A351-CF8
15	STOPPER	AISI 304
16	SCREW	
17	SPRING ROD	55CrSi
18	SPRING	AISI 304
19	STEEL TUBE	PVC
20	HANDLE SLEEVE	AISI 304
21	FLAT WASHER	
22	HEX NUTS	AISI 304
23	BOLT	
24	TRUNNION SEAT	
25	FLAT WASHER	AISI 304
26	BOLT	

JFW INDUSTRIES, INC.
 6731 N.E. 47TH PORTLAND, OREGON 97218 U.S.A.
 E-mail: jfwvalve@comcast.net
 Tel: 1 503 288 0673
 Fax: 1 503 288 1075

JFW INDUSTRIES, INC.

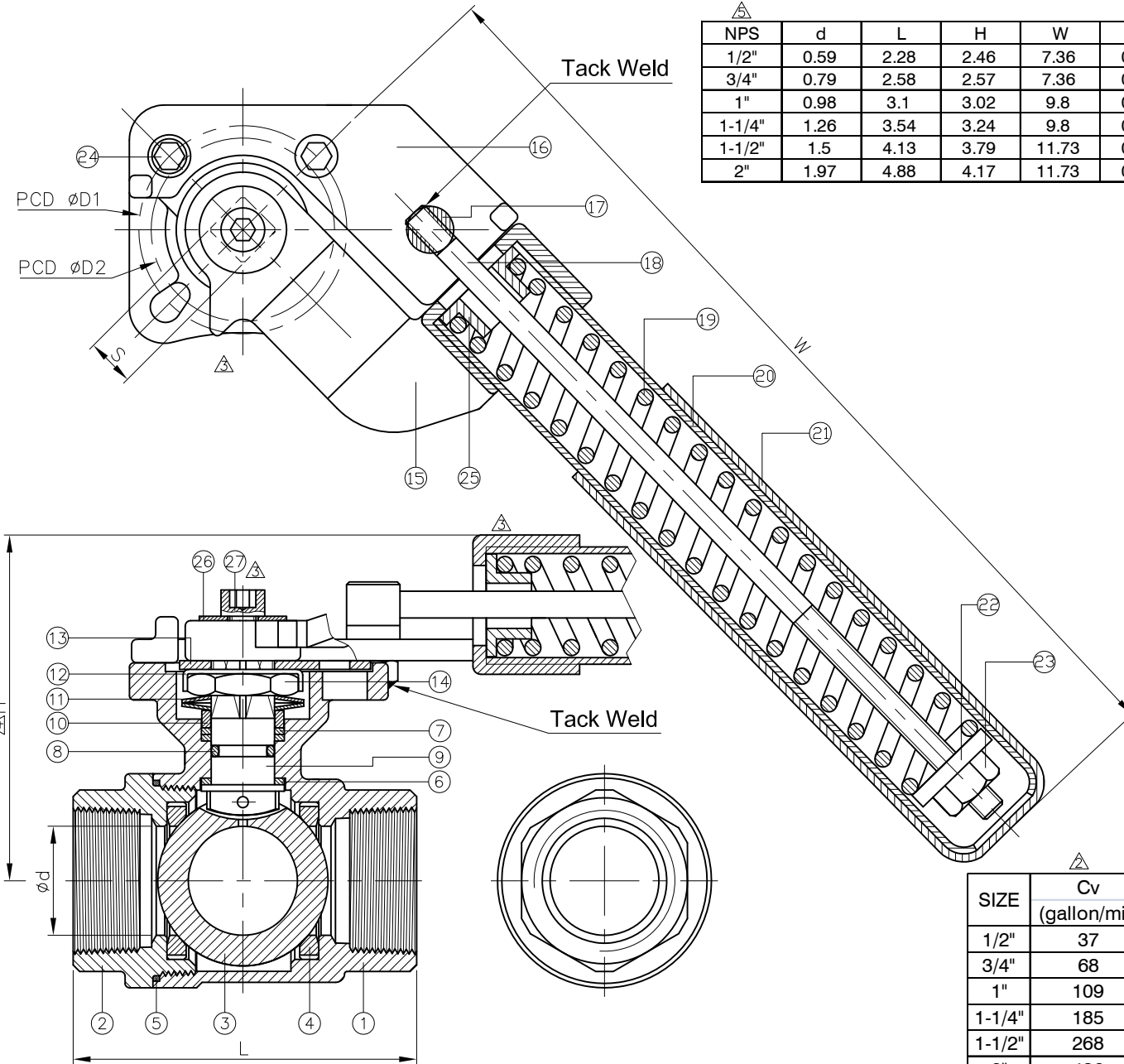
CHECK BY	DRAWING BY	DATE	SPECIFICATION	2-PC Screwed End Ball Valve 1000 WOG
	<i>Yuan</i>	Aug.10.2022	MATERIAL	CF8M
			PROCESS/Nr.	
			UNIT / SCALE	mm

△	Revise drawing & material,remove DN dimension	08/10/2022	Ray
△	Add Cv	03/03/2016	Ray
△	Add weight	02/04/2016	Ray
Revise	Description	Date	Approve

DRAWING NO. **BV-002-SR**

NPS	d	L	H	W	S	D1	D2	ISO 5211	Torque (in-lb)	Weight (lb)
1/2"	0.59	2.28	2.46	7.36	0.35	1.65	1.42	F03/F04	62	1.6
3/4"	0.79	2.58	2.57	7.36	0.35	1.65	1.42	F03/F04	62	1.8
1"	0.98	3.1	3.02	9.8	0.43	1.97	1.65	F04/F05	106.2	3.5
1-1/4"	1.26	3.54	3.24	9.8	0.43	1.97	1.65	F04/F05	106.2	4.4
1-1/2"	1.5	4.13	3.79	11.73	0.55	2.76	1.97	F05/F07	177	6.4
2"	1.97	4.88	4.17	11.73	0.55	2.76	1.97	F05/F07	177	8.4

unit:in



ITEM	PARTS	MATERIAL
1	BODY	ASTM A351-CF8M
2	CAP	
3	BALL	RTFE
4	SEAT	
5	SEAL	PTFE
6	THRUST WASHER	
7	PACKING	VITON
8	O-RING	
9	STEM	ASTM A276-316
10	GLAND RING	AISI 304
11	BELLEVILLE WASHER	AISI 301
12	LOCK WASHER	AISI 304
13	STOPPER	
14	STEM NUT	ASTM A351-CF8
15	HANDLE HEAD	
16	STOPPER	AISI 304
17	SCREW	
18	SPRING ROD	PVC
19	SPRING	
20	STEEL TUBE	AISI 304
21	HANDLE SLEEVE	
22	FLAT WASHER	AISI 304
23	HEX NUTS	
24	BOLT	NYLON
25	TRUNNION SEAT	
26	FLAT WASHER	AISI 304
27	BOLT	

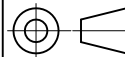
SIZE	Cv (gallon/min)
1/2"	37
3/4"	68
1"	109
1-1/4"	185
1-1/2"	268
2"	486

△	Remove DN dimension	08/10/2022	Ray
△	Revise H symbol	04/17/2018	Ray
△	Revise drawing & parts	04/17/2018	Ray
△	Add Cv	03/03/2016	Ray
△	Add weight & torque	02/03/2016	Ray
Revise	Description	Date	Approve

JFW INDUSTRIES, INC.
6731 N.E. 47TH PORTLAND, OREGON 97218 U.S.A.
E-mail: jfwvalve@comcast.net
Tel: 1 503 288 0673
Fax: 1 503 288 1075

JFW INDUSTRIES, INC.

CHECK BY	DRAWING BY	DATE	SPECIFICATION	2-PC Screwed End Ball Valve 1000 WOG
	Yuan	Aug.10.2022	MATERIAL	CF8M
			PROCESS/Nr.	
			UNIT / SCALE	mm



DRAWING NO.

BV-002-SR