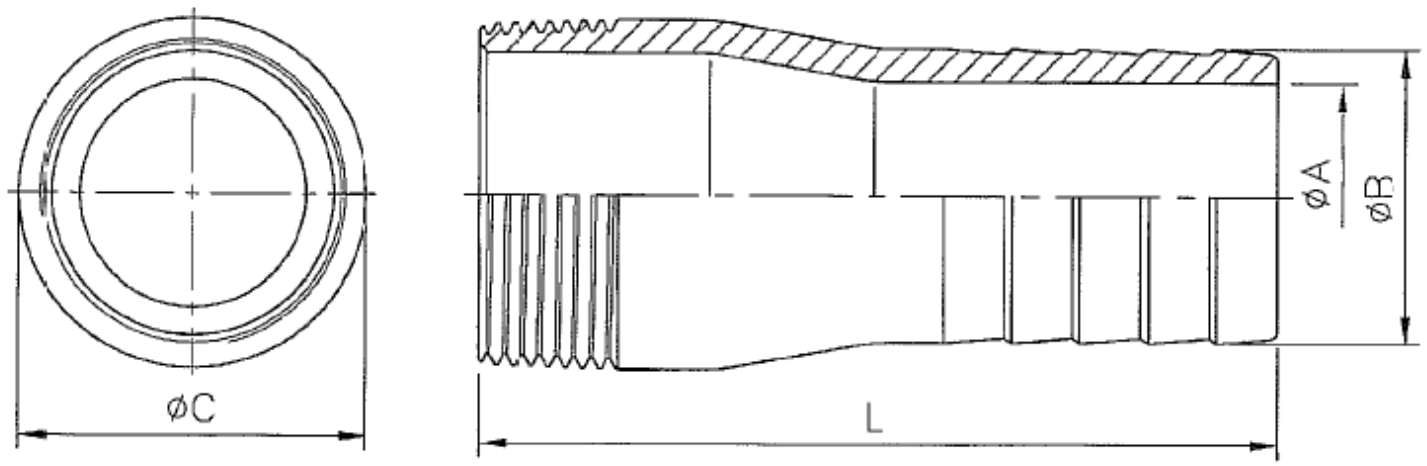


BARREL HOSE NIPPLE



BARREL HOSE NIPPLE, ONE END NPT THREAD AND HOSE BARBED OTHER END (ROUND SHAPE)

SIZE	1/4"		3/8"		1/2"		3/4"		1"		1-1/4"		1-1/2"		2"		2-1/2"		3"		4"	
	mm	in	mm	in	mm	in	mm	in	mm	in	mm	in	mm	in	mm	in	mm	in	mm	in	mm	in
A	3.96	0.16	5.94	0.23	9.12	0.36	15.6	0.61	19.1	0.75	25.4	1	31.75	1.25	44.45	1.75	54.7	2.15	67.5	2.66	94.5	3.72
B	6.48	0.26	9.56	0.38	13.6	0.54	19.6	0.77	26.1	1.03	33	1.3	39	1.54	51.6	2.03	64.2	2.53	77.4	3.05	102.6	4.04
C	13.8	0.54	17.2	0.68	21.3	0.84	26.7	1.05	33.4	1.31	42.2	1.66	48.3	1.9	60.3	2.37	73	2.87	88.9	3.5	114.3	4.5
L	54	2.13	57.2	2.25	70	2.76	80	3.15	90.5	3.56	94.3	3.71	106.2	4.18	119.4	4.7	139.7	5.5	152.4	6	184.5	7.26

Tolerance: $\pm 0.5\text{mm}$ (1/4"~2")
 $\pm 0.8\text{mm}$ (2-1/2"~4")

JFW INDUSTRIES, INC.
 5731 N.E. 47TH PORTLAND,
 OREGON 97216 U.S.A.
 E-mail: jfwvalve@comcast.net
 Tel: 1 503 288 0573
 Fax: 1 503 288 1075

JFW INDUSTRIES, INC.

CHECK BY	DRAWN BY	DATE	SPECIFICATION	Barrel Hose Nipple
	<i>Dane</i>	Apr.29.2010	MATERIAL	304/315
	<i>Eric</i>		PROCESS/NO.	
			UNIT / SCALE	mm

△			
△			
△			
Revise	Description	Date	Approve
DRAWING NO. F25-01		-10	