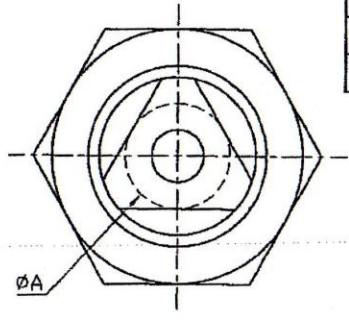
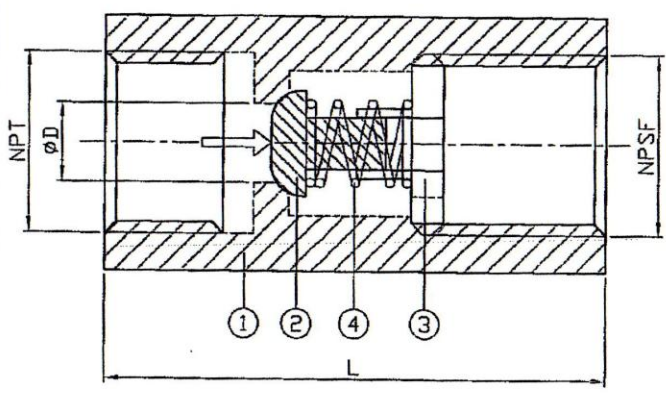
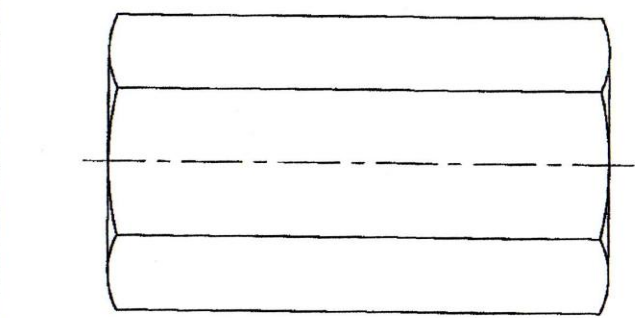


JFW INDUSTRIES, INC.  
 6731 N.E. 47TH PORTLAND, OREGON 97218 U.S.A.  
 E-mail: jfwvalve@comcast.net  
 Tel: 1 503 288 0673  
 Fax: 1 503 288 1075

GENERAL TOLERANCE  
 0.5-3 ±0.1  
 3-30 ±0.2  
 31-120 ±0.3  
 121-320 ±0.5  
 321-1000 ±0.8

Ra  
 0.2  
 1.5  
 6.3  
 25  
 JIS



| ITEM | PARTS     | MATERIAL       |
|------|-----------|----------------|
| 1    | BODY      | SUS 316        |
| 2    | DISC      |                |
| 3    | GUIDE CAP | ASTM A351-CF8M |
| 4    | SPRING    | SUS 316        |

| Size   | D    | A    | L    |
|--------|------|------|------|
| 1/4"   | 0.2  | 0.31 | 1.73 |
| 3/8"   | 0.28 | 0.43 | 1.89 |
| 1/2"   | 0.35 | 0.47 | 2.24 |
| 3/4"   | 0.49 | 0.63 | 2.76 |
| 1"     | 0.59 | 0.79 | 3.39 |
| 1-1/4" | 0.79 | 0.94 | 3.7  |
| 1-1/2" | 0.98 | 1.14 | 3.78 |
| 2"     | 1.26 | 1.5  | 4.49 |

unit:in

Opening Pressure STD In PSI

| Size   | ↑    | ↓    | →    |
|--------|------|------|------|
| 1/4"   | 0.39 | 0.33 | 0.36 |
| 3/8"   | 0.39 | 0.33 | 0.36 |
| 1/2"   | 0.39 | 0.33 | 0.36 |
| 3/4"   | 0.39 | 0.33 | 0.36 |
| 1"     | 0.39 | 0.33 | 0.36 |
| 1-1/4" | 0.42 | 0.33 | 0.38 |
| 1-1/2" | 0.45 | 0.33 | 0.39 |
| 2"     | 0.45 | 0.33 | 0.39 |

\*All size at 0.5PSI cracking

JFW INDUSTRIES, INC.

| CHECK BY | DRAWING BY  | DATE        | SPECIFICATION                        |
|----------|-------------|-------------|--------------------------------------|
|          | <i>Duno</i> | Apr.11.2013 | Spring Vertical Check Valve 2000 WOG |
|          |             |             | MATERIAL SUS316                      |
|          |             |             | PROCESS/Hr.                          |
|          |             |             | UNIT / SCALE mm                      |

| Revise             | Description | Date | Approve |
|--------------------|-------------|------|---------|
|                    |             |      |         |
| DRAWING NO. ILC-2M |             | -13A |         |