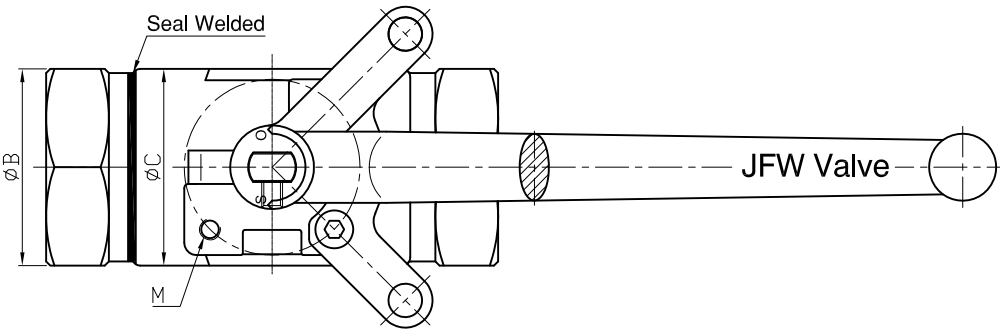


Ra	0.2	JIS
1.6		
6.3		
25		
±0.1	±0.2	
±0.2	±0.3	
±0.3	±0.5	
±0.5	±0.8	
0.5~5		
6~30		
31~120		
121~320		
321~1000		
GENERAL TOLERANCE		



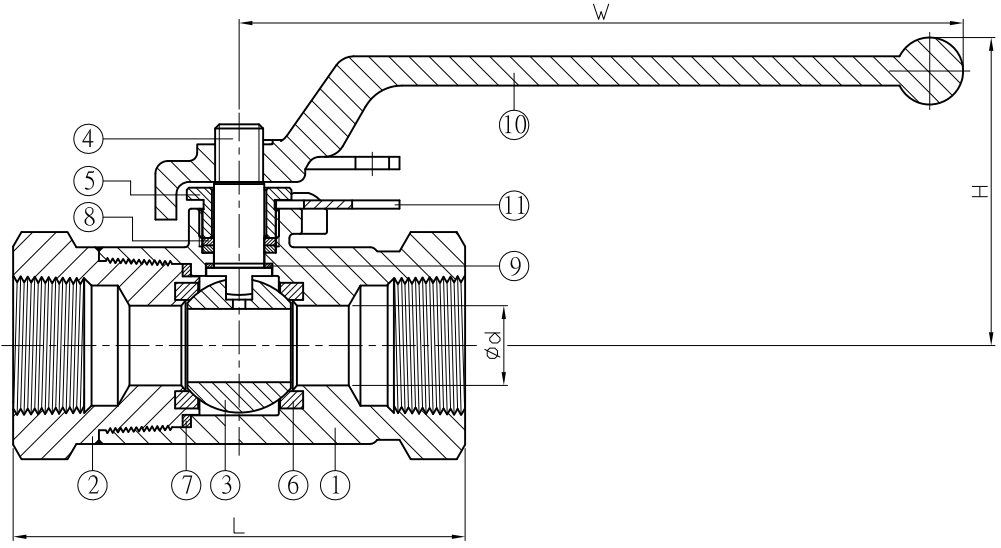
DN	L	H	W	d	B	C	ISO 5211	M	Torque (N-M)	Weight (kg)
8 F	76.2	56.6	142	6.35	32	39	F03	M5*P0.8	9	0.7
10 S	76.2	56.6	142	6.35	32	39	F03	M5*P0.8	9	0.7
15 F	102	56.6	142	12.7	38	39	F03	M5*P0.8	9	0.9
20 F	108	76.1	173	19	47	52	F04	M5*P0.8	27.1	1.6
25 F	122	83.1	173	25.4	55	68	F05	M6*P1	33.3	1.8
40 F	134	117	247.5	38.1	77	97	F07	M8*P1.25	51.4	6.1
50 S	158	117	247.5	38.1	92	97	F07	M8*P1.25	51.4	7.4

F: Full Port S: Standard Port unit:mm

NPS	L	H	W	d	B	C	ISO 5211	M	Torque (in-lb)	Weight (lb)
1/4" F	3	2.23	5.59	0.25	1.26	1.54	F03	M5*P0.8	80	1.5
3/8" S	3	2.23	5.59	0.25	1.26	1.54	F03	M5*P0.8	80	1.5
1/2" F	4	2.23	5.59	0.5	1.5	1.54	F03	M5*P0.8	80	2
3/4" F	4.25	3	6.81	0.75	1.85	2.05	F04	M5*P0.8	240	3.4
1" F	4.8	3.27	6.81	1	2.17	2.68	F05	M6*P1	295	4
1-1/2" F	5.28	4.61	9.74	1.5	3.03	3.82	F07	M8*P1.25	455	13.4
2" S	6.22	4.61	9.74	1.5	3.62	3.82	F07	M8*P1.25	455	16.3

F: Full Port S: Standard Port unit:in

JFW INDUSTRIES, INC.  
 6731 N.E. 47TH PORTLAND, OREGON 97218 U.S.A.  
 E-mail: jfwvalve@comcast.net  
 Tel: 1 503 288 0673  
 Fax: 1 503 288 1075



**Fire Safe Certified to API 607**

ITEM	PARTS	MATERIAL
1	BODY	ASTM A351-CF8M
2	CAP	
3	BALL	17-4PH
4	STEM	ASTM A564-630 H900
5	GLAND NUT	AISI 304
6	SEAT	PEEK
7	SEAL	GRAPHITE
8	PACKING	
9	THRUST WASHER	CTFE
10	HANDLE	AISI 304
11	LOCK PAD	

SIZE	Cv (gallon/min)
1/4" F	7
3/8" S	7
1/2" F	26
3/4" F	61
1" F	114
1-1/2" F	262
2" S	268

**FEATURES:**  
 - NACE MR0175.

△	Add features	06/30/2017	Ray
△	Delete 1" S dimension	03/03/2017	Ray
△	Add Cv	03/03/2016	Ray
Revise	Description	Date	Approve

<b>JFW INDUSTRIES, INC.</b>	CHECK BY	DRAWING BY	DATE	SPECIFICATION	2-PC Screwed End Ball Valve 6000 WOG
		<i>Yuan</i>	Jun.30.2017	MATERIAL	CF8M
				PROCESS/Nr.	
				UNIT / SCALE	mm

DRAWING NO. **BV-6M** **-17A**