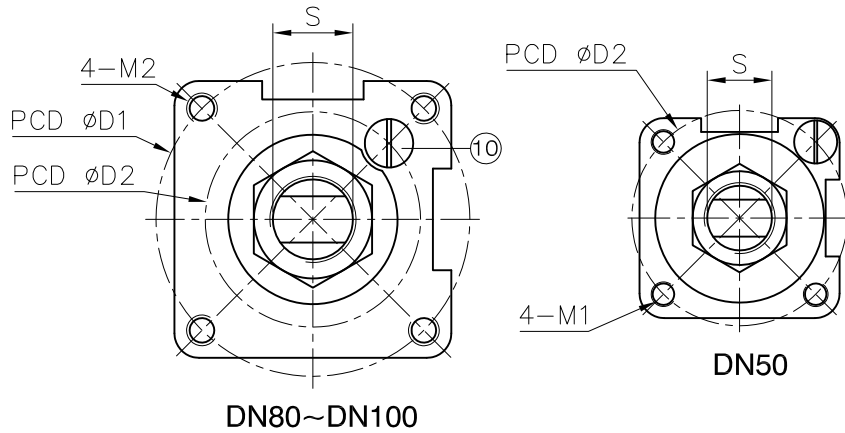


Ra
0.2
1.6
6.3
25
JIS

±0.1
±0.2
±0.3
±0.5
±0.8
0.5~5
6~30
31~120
121~320
321~1000
GENERAL TOLERANCE

JFW INDUSTRIES, INC.
6731 N.E. 47TH PORTLAND, OREGON 97218 U.S.A.
E-mail: jfwvalve@comcast.net
Tel: 1 503 288 0673
Fax: 1 503 288 1075

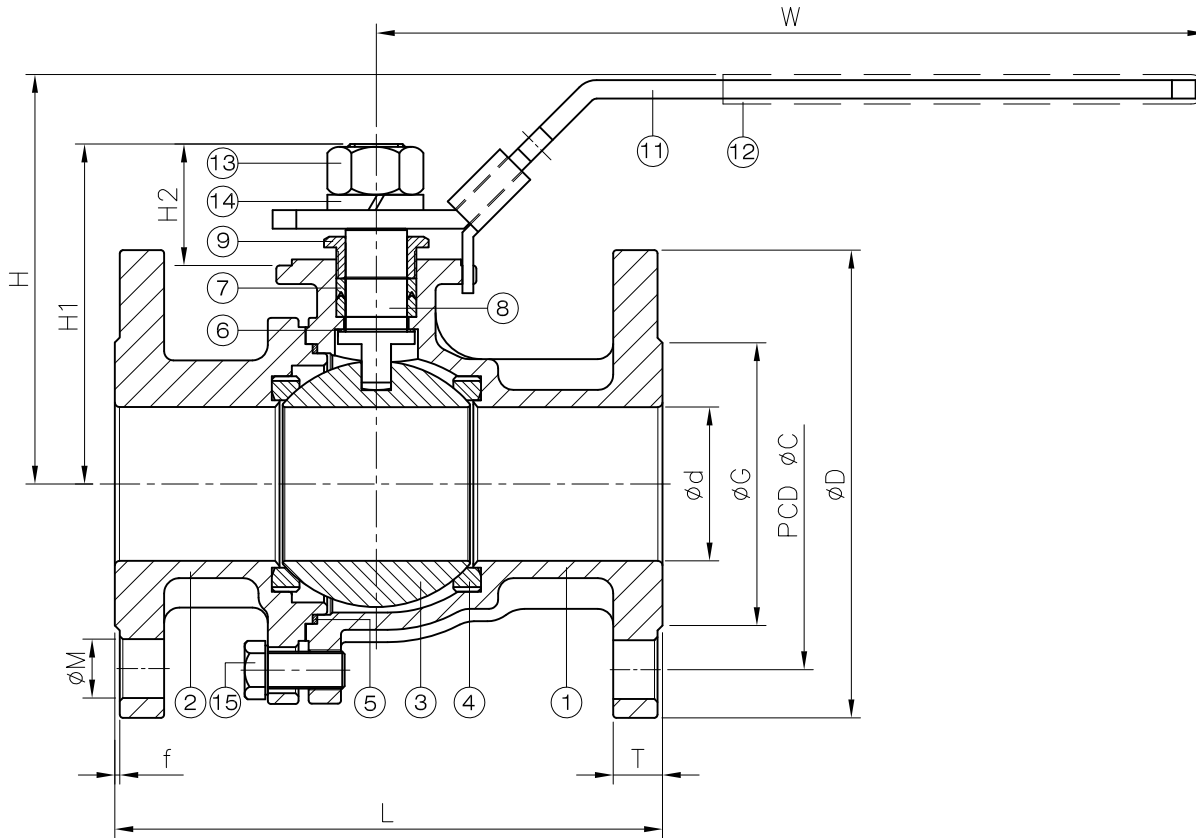


DN	d	G	C	D	L	H	H1	H2	W	T	f	S	D1	D2	M	M1	M2	Torque (N-M)		Weight (kg)
																		Breakaway	Action	
50	50	92	127	165	216	135	107	39.4	267	22.4	1.6	19.1	-	70	19	M8	-	32.2	27.2	10.3
80	76	127	168	210	282	166	139	43	390	28.5	1.6	19.1	102	70	22	M8	M10	87.2	74.6	22.7
100	100	157	200	254	305	181	157	43	390	31.8	1.6	19.1	102	70	22	M8	M10	98.2	75.2	36.7

unit:mm

NPS	d	G	C	D	L	H	H1	H2	W	T	f	S	D1	D2	M	M1	M2	Torque (in-lb)		Weight (lb)
																		Breakaway	Action	
2"	1.97	3.62	5	6.5	8.5	5.31	4.21	1.55	10.51	0.88	0.06	0.75	-	2.76	0.75	M8	-	285	240.7	22.7
3"	2.99	5	6.61	8.27	11.1	6.54	5.47	1.69	15.35	1.12	0.06	0.75	4.02	2.76	0.87	M10	M10	771.8	660.3	50
4"	3.94	6.18	7.87	10	12.01	7.13	6.18	1.69	15.35	1.25	0.06	0.75	4.02	2.76	0.87	M10	M10	869.1	665.6	80.9

unit:in

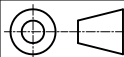


ITEM	PARTS	MATERIAL
1	BODY	ASTM A351-CF8M
2	CAP	
3	BALL	RTFE
4	SEAT	
5	SEAL	PTFE
6	THRUST WASHER	
7	PACKING	ASTM A276-316
8	STEM	
9	GLAND NUT	AISI 304
10	STOP PIN	
11	HANDLE	STAINLESS STEEL
12	HANDLE SLEEVE	PVC
13	STEM NUT	AISI 304
14	SPRING WASHER	
15	BOLT	

△			
△			
△			
Revise	Description	Date	Approve
DRAWING NO.		BV-300 - 14	

JFW INDUSTRIES, INC.

CHECK BY	DRAWING BY	DATE	SPECIFICATION	2-PC Flanged End Ball Valve Class 300
	<i>Sammy</i>	Apr.30.2014	MATERIAL	CF8M
			PROCESS/Nr.	
			UNIT / SCALE	mm



Ra
0.2
1.6
6.3
25

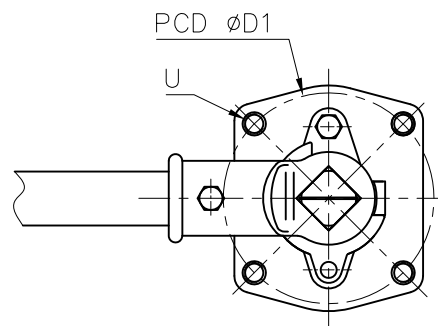
JIS
▽▽▽▽▽
▽▽▽
▽▽
▽

±0.1
0.5~5
6~30
31~120
121~320
321~1000
±0.2
±0.3
±0.5
±0.8

GENERAL TOLERANCE

JFW INDUSTRIES, INC.
6731 N.E. 47TH PORTLAND,
OREGON 97218 U.S.A.

E-mail: jfwvalve@comcast.net
Tel: 1 503 288 0673
Fax: 1 503 288 1075

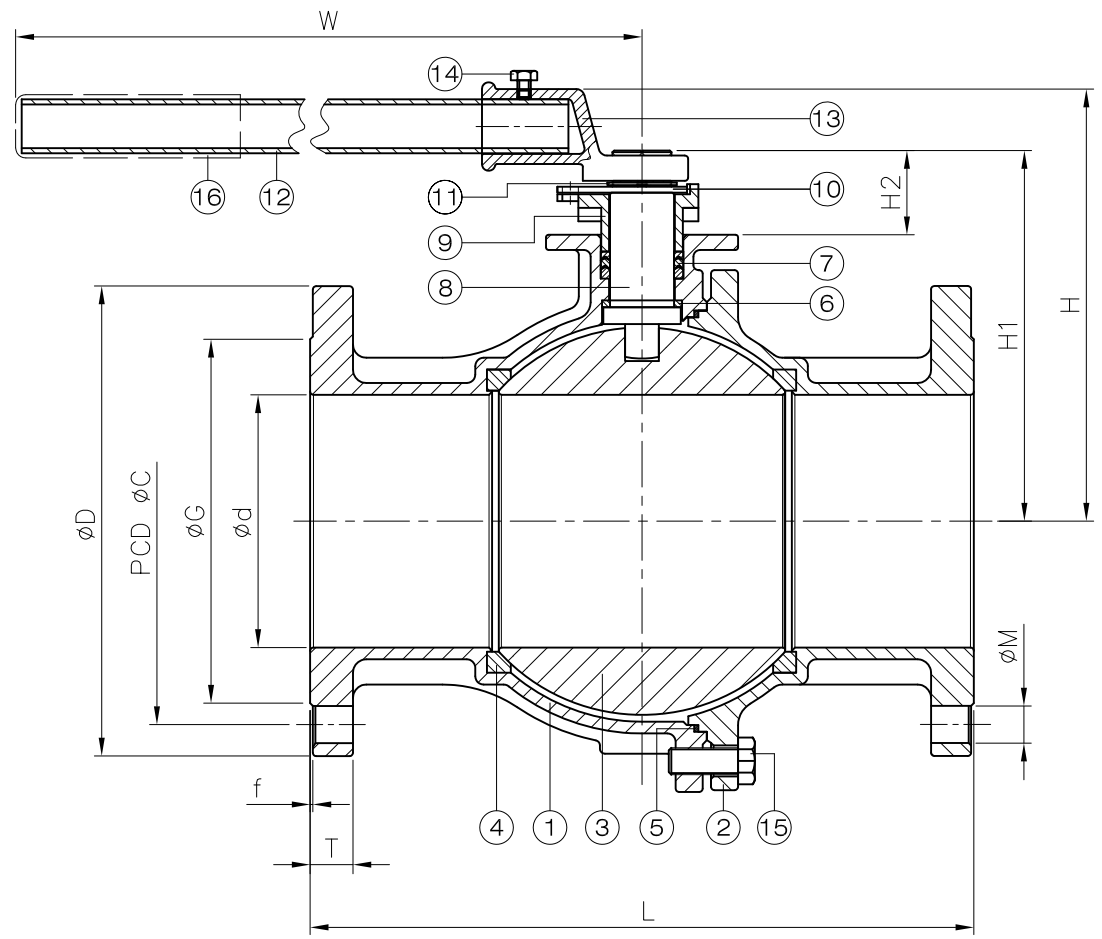


DN	d	G	C	D	L	H	H1	H2	W	T	f	D1	M	U	Torque (N-M)		Weight (kg)
															Breakaway	Action	
150	150	216	270	317.5	403	256.5	220	50	743	36.6	1.6	125	22.5	M12X1.75	185	165	79

unit:mm

NPS	d	G	C	D	L	H	H1	H2	W	T	f	D1	M	U	Torque (in-lb)		Weight (lb)
															Breakaway	Action	
6"	5.91	8.5	10.63	12.5	15.87	10.1	8.66	1.97	29.25	1.44	0.06	4.92	0.89	M12X1.75	1637.4	1460.4	174.2

unit:in



ITEM	PARTS	MATERIAL
1	BODY	ASTM A351-CF8M
2	CAP	
3	BALL	
4	SEAT	RTFE
5	SEAL	PTFE
6	THRUST WASHER	
7	PACKING	
8	STEM	ASTM A276-316
9	GLAND	AISI 304
10	STOPPER	
11	CIRCLIPS FOR SHAFT	
12	STEEL TUBE	
13	WRENCH BLOCK	
14	BOLT	
15	BOLT	PVC
16	HANDLE SLEEVE	

JFW INDUSTRIES, INC.

CHECK BY	DRAWING BY	DATE	SPECIFICATION	2-PC Flanged End Ball Valve Class 300
	<i>Jammy</i>	Apr.30.2014	MATERIAL	CF8M
			PROCESS/Nr.	
			UNIT / SCALE	mm

△			
△			
△			
Revise	Description	Date	Approve
DRAWING NO.		BV-300 - 14	