

NPS	d	G	C	D	L	H	H1	W	T	f	S	D1	D2	Ra	Rb	N	M	Torque (in-lb)	Weight (lb)
1"	0.98	2.01	3.13	4.25	6.61	3.78	0.43	6.02	0.44	0.06	0.43	1.65	1.97	0.12	0.14	4	0.63	632.8	17.2

unit:in

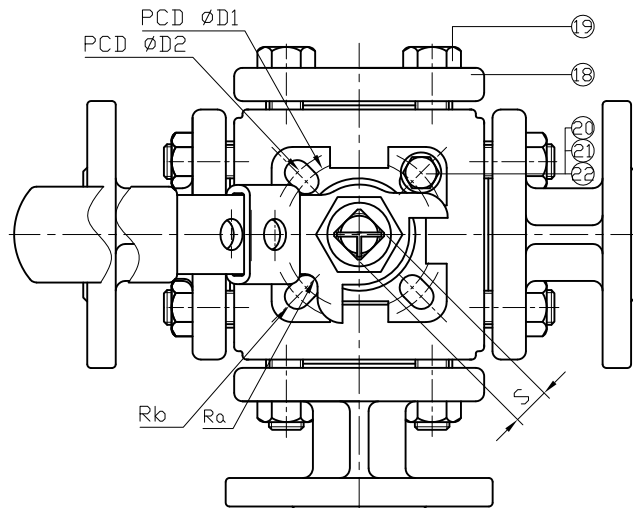
**FEATURES:**

- END FLANGE DIMENSION : ASME B16.5
- TEST : ASME B16.34
- INVESTMENT CASTING BODY
- WITH ISO 5211 DIRECT MOUNTING PAD
- LOCKING DEVICE
- THERE ARE FOUR SEATS
- L-PORT AVAILABE / 360°PAD

PORT TYPE	1	2	3	4
L	1 ⊕ <sub>3</sub> 2	1 ⊕ <sub>3</sub> 2	1 ⊕ <sub>3</sub> 2	1 ⊕ <sub>3</sub> 2

ITEM	PARTS	MATERIAL	
1	BODY	ASTM A351-CF8M	ASTM A351-CF8
2	CAP		
3	BALL		
4	SEAT	RTFE	
5	STEM	SUS 316	
6	GASKET	RTFE	
7	THRUST WASHER	TFM 4215	
8	O-RING	VITON	
9	PACKING	RTFE	
10	GLAND RING	SUS 304	
11	SPRING WASHER	SUS 301	
12	STEM NUT		
13	STOP WASHER		
14	HANDLE WASHER	SUS 304	
15	LOCKING DEVICE		
16	HANDLE		
17	HANDLE SLEEVE	PLASTIC	
18	CAP-A	ASTM A351-CF8M	ASTM A351-CF8
19	CAP-A BOLT		
20	STOP PIN		
21	BOLT	SUS 304	
22	NUT		

SIZE	Cv (USgal/min)
1"	25



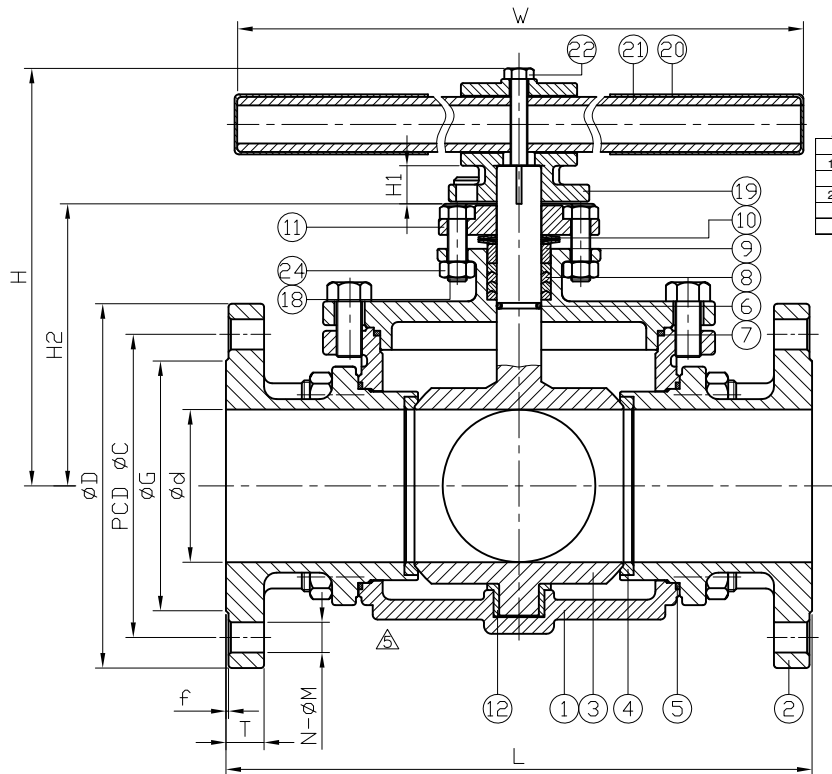
JFW INDUSTRIES, INC.  
 6731 N.E. 47TH PORTLAND, OREGON 97218 U.S.A.  
 E-mail: jfwvalve@comcast.net  
 Tel: 1 503 288 0673  
 Fax: 1 503 288 1075

**JFW INDUSTRIES, INC.**

CHECK BY	DRAWING BY	DATE	SPECIFICATION	3-Way L Port Ball Valve Class 150
	Ray	Mar.26.2020	MATERIAL	CF8M/CF8
			PROCESS/Nr.	
			UNIT / SCALE	mm

△	Remove dimension	03/26/2020	Yuan
△	Revise weight & torque	03/02/2020	Ray
△	Add Cv	03/09/2016	Ray
△	Revise dimension & material	02/24/2016	Ray
Revise	Description	Date	Approve

DRAWING NO. **BV-150-3LP**



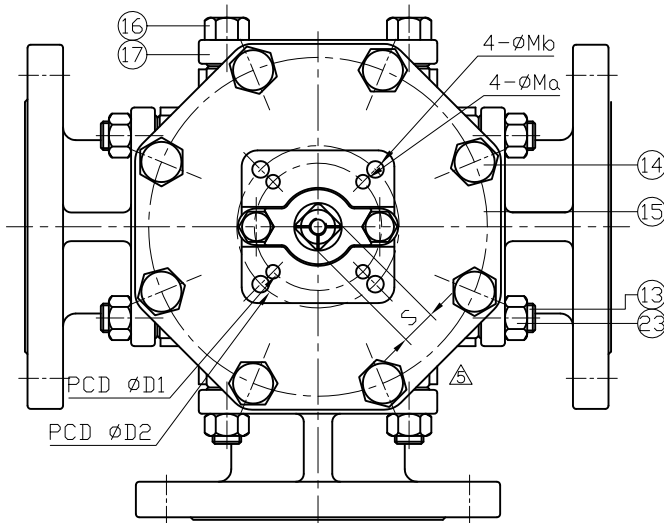
NPS	d	G	C	D	L	H	H1	H2	W	T	f	S	D1	D2	N	M	Ma	Mb	ISO 5211	Torque (in-lb)
1-1/2"	1.57	2.87	3.88	5	8.7	7.78	0.75	5.2	15.87	0.56	0.06	0.87	2.76	4.02	4	0.63	0.39	0.47	F07-F10	920.5
2"	1.97	3.82	4.74	5.98	10	8.03	0.75	5.47	15.87	0.83	0.06	0.87	2.76	4.02	4	0.75	0.39	0.47	F07-F10	1265.7
2-1/2"	2.56	4.13	5.49	7.01	11.81	9.49	0.94	6.38	19.84	0.69	0.06	0.87	4.02	-	4	0.75	0.47	-	F10	1956
3"	2.99	5	6	7.48	12.01	9.65	0.94	6.73	19.84	0.75	0.06	0.87	4.02	-	4	0.75	0.47	-	F10	2418.2
4"	3.78	6.18	7.5	9.02	14.53	10.71	0.94	7.56	25.75	0.94	0.06	0.87	4.02	-	8	0.75	0.47	-	F10	3106.6

unit:in

PORT TYPE	1	2	3	4
L	1 ⊕ 2 3	1 ⊕ 2 3	1 ⊕ 2 3	1 ⊕ 2 3

ITEM	PARTS	MATERIAL	
1	BODY	ASTM A351-CF8M	ASTM A351-CF8
2	CAP		
3	BALL	RTFE	
4	SEAT	RTFE	
5	GASKET	VITON	
6	O-RING	RTFE	
7	GASKET	RTFE	
8	PACKING	SUS 304	
9	GLAND RING	SUS 301	
10	SPRING WASHER	ASTM A351-CF8	
11	GLNAD FLANGE	RTFE	
12	SLEEVE	SUS 304	
13	STUD	SUS 304	
14	CAP-A BOLT	SUS 304	
15	CAP-A	ASTM A351-CF8M	ASTM A351-CF8
16	CAP-B BLOT	SUS 304	
17	CAP-B	ASTM A351-CF8M	ASTM A351-CF8
18	STUD	SUS 304	
19	HANDLE HEAD	ASTM A351-CF8	
20	HANDLE SLEEVE	PLASTIC	
21	HANDLE POLE	GALVANIZED PIPE	
22	HANDLE BOLT	SUS 304	
23	NUT	SUS 304	
24	NUT	SUS 304	

SIZE	Cv (USgal/min)
1-1/2"	56
2"	110
2-1/2"	160
3"	260
4"	430



- FEATURES :**
- END FLANGE DIMENSION : ASME B16.5
  - TEST : API 598
  - INVESTMENT CASTING BODY
  - WITH ISO 5211 DIRECT MOUNTING PAD
  - FIXED BALL / FULL PORT
  - THERE ARE FOUR SEATS
  - L-PORT OR T-PORT AVAILABE / 360°PAD

Symbol	Description	Date	By
△	Revise drawing & dimension & material	08/10/2022	Ray
△	Remove DN dimension	03/26/2020	Yuan
△	Add H2 dimension & revise torque	03/02/2020	Ray
△	Add Cv	03/09/2016	Ray
△	Revise dimension & material	02/24/2016	Ray

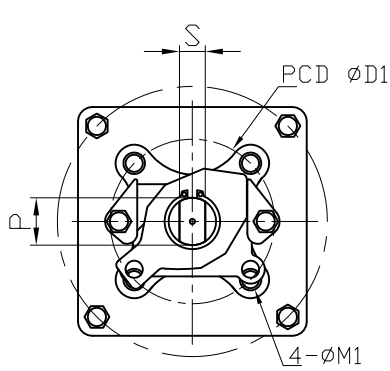
JFW INDUSTRIES, INC.  
6731 N.E. 47TH PORTLAND,  
OREGON 97218 U.S.A.  
E-mail: jfwvalve@comcast.net  
Tel: 1 503 288 0673  
Fax: 1 503 288 1075

**JFW INDUSTRIES, INC.**

CHECK BY	DRAWING BY	DATE	SPECIFICATION	3-Way L Port Ball Valve Class 150
	<i>Yuan</i>	Aug.10.2022	MATERIAL	CF8M/CF8
			PROCESS/Nr.	
			UNIT / SCALE	mm

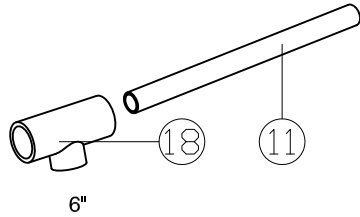
DRAWING NO.

**BV-150-3LP**

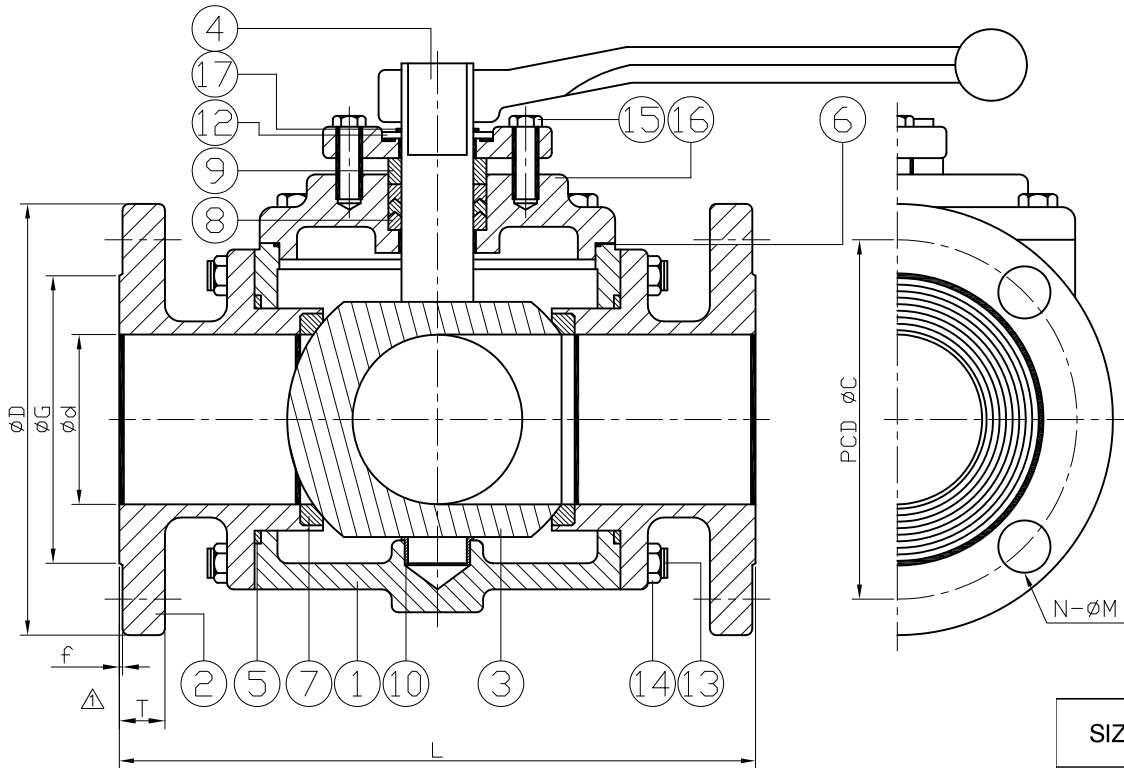


NPS	d	G	C	D	L	T	f	S	P	D1	N	M	M1	Torque (in-lb)	Weight (lb)
6"	5.94	8.5	9.51	10.98	16.93	1	0.06	1.38	1.77	4.92	8	0.87	1/2"	4257.2	280

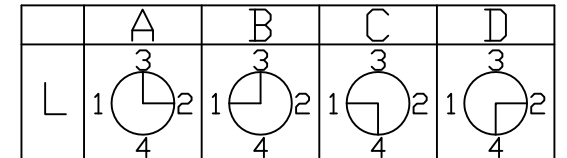
unit:in



ITEM	PARTS	MATERIAL
1	BODY	ASTM A351-CF8M
2	CAP	
3	BALL	
4	STEM	
5	SEAL	PTFE
6	GASKET	
7	SEAT	RTFE
8	PACKING	PTFE
9	GLAND	ASTM A351-CF8
10	BUSHING	PTFE+50%GF
11	HANDLE	FCD 450
12	STOP PLATE	ASTM A351-CF8
13	STUD	ASTM A193-B8
14	NUT	ASTM A194-8
15	BOLT	SS 304
16	COVER	ASTM A351-CF8M
17	C RETAINER RING	S45C
18	HANDLE ADAPTER	SS 41



SIZE	Cv (gallon/min)
6"	970



JFW INDUSTRIES, INC.  
 6731 N.E. 47TH PORTLAND, OREGON 97218 U.S.A.  
 E-mail: jfwvalve@comcast.net  
 Tel: 1 503 288 0673  
 Fax: 1 503 288 1075

**JFW INDUSTRIES, INC.**

CHECK BY	DRAWING BY	DATE	SPECIFICATION	3 Way Flanged End Ball Valve Class 150
	<i>Ray</i>	Apr.29.2021	MATERIAL	CF8M
			PROCESS/Nr.	
			UNIT / SCALE	mm

△			
△			
△	Revise drawing & material & dimension	04/29/2021	Yuan
Revise	Description	Date	Approve

DRAWING NO. **BV-150-3LP**