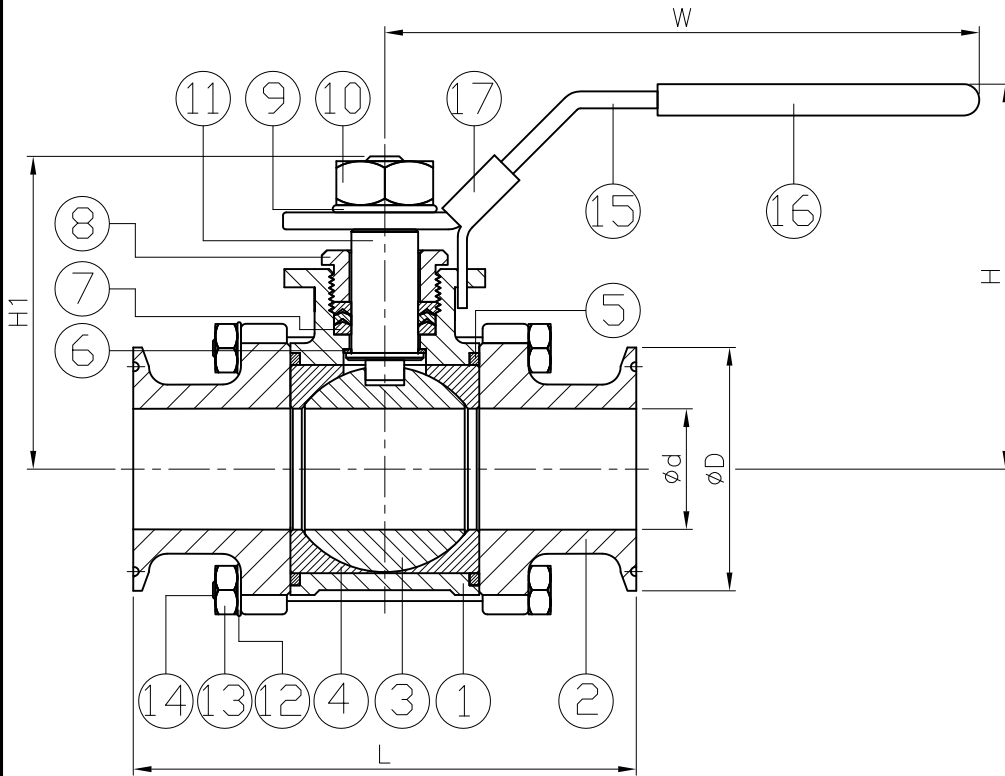
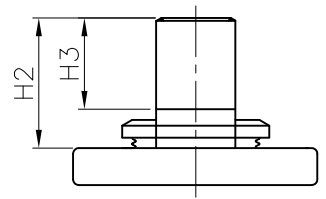


NPS	d	D	L	H	H1	H2	H3	W	S	E	F	ISO 5211	Torque For Cavity Filler Seat (in-lb)	Weight (lb)
1/2"	0.38	1	3.57	2.5	1.91	0.71	0.51	5.56	0.26	1	1.46	F03	32.2	1.7
3/4"	0.62	1	4.06	2.62	2.04	0.74	0.51	5.56	0.26	1	1.46	F03	44.9	2.1
1"	0.87	1.99	4.53	2.73	2.15	0.71	0.51	5.56	0.26	1.17	1.65	F04	71.3	3
1-1/2"	1.37	1.99	5.51	3.96	3.25	1.18	0.77	7.41	0.33	1.39	1.97	F05	172.6	5.9
2"	1.88	2.52	6.22	4.35	3.6	1.14	0.77	7.41	0.33	1.39	1.97	F05	230.1	9.2
2-1/2"	2.37	3.05	7.76	5.48	4.61	1.48	1.02	10.24	0.47	1.95	2.83	F07	460.2	19.2
3"	2.87	3.58	8.98	5.83	4.99	1.5	1.02	10.24	0.47	1.95	2.83	F07	517.8	31.3
4"	3.84	4.69	9.52	6.89	6.38	2.05	1.38	11.61	0.63	2.84	3.7	F10	747.9	45.2

unit:in



SIZE	Cv (gallon/min)
1/2"	15
3/4"	42
1"	86
1-1/2"	218
2"	421
2-1/2"	703
3"	1060
4"	1897



STEM MOUNTING DIMENSIONS

ITEM	PARTS	MATERIAL
1	BODY	ASTM A351-CF8M
2	CAP	
3	BALL	
4	SEAT	
5	SEAL	PTFE
6	THRUST WASHER	
7	PACKING	AISI 304
8	GLAND NUT	
9	STEM WASHER	
10	STEM NUT	
11	STEM	AISI 316
12	BOLT WASHER	AISI 304
13	NUT	
14	BOLT	
15	HANDLE	STAINLESS STEEL
16	HANDLE SLEEVE	PLASTIC
17	LOCKING DEVICE	STAINLESS STEEL

Body W.P.: 1000 WOG
Clamp End W.P.: 200 WOG (as per ASME BPE standard)

△	Remove DN dimension	08/10/2022	Ray
△	Add Cv	03/03/2016	Ray
△	Revise torque & material	02/25/2016	Ray
Revise	Description	Date	Approve

JFW INDUSTRIES, INC.
6731 N.E. 47TH PORTLAND, OREGON 97218 U.S.A.
E-mail: jfwvalve@comcast.net
Tel: 1 503 288 0673
Fax: 1 503 288 1075

JFW INDUSTRIES, INC.

CHECK BY	DRAWING BY	DATE	SPECIFICATION	3-PC Clamp End Ball Valve
	<i>Yuan</i>	Aug.10.2022	MATERIAL	CF8M
			PROCESS/Nr.	
			UNIT / SCALE	mm

DRAWING NO. **BV-003-C**