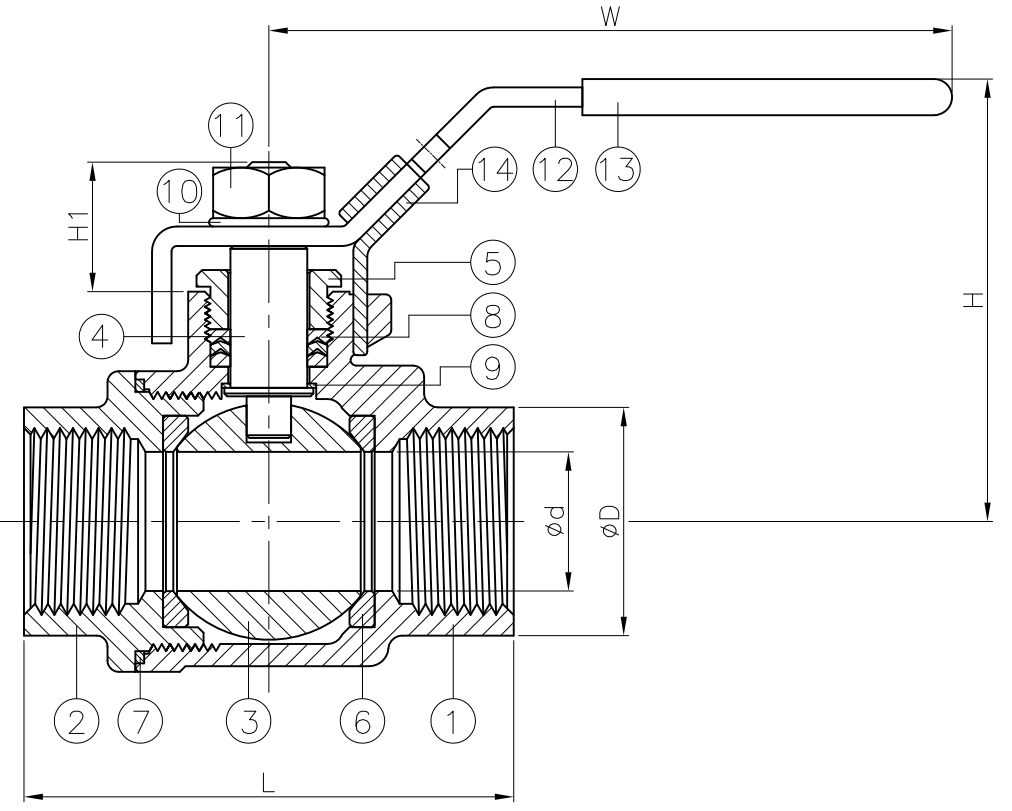
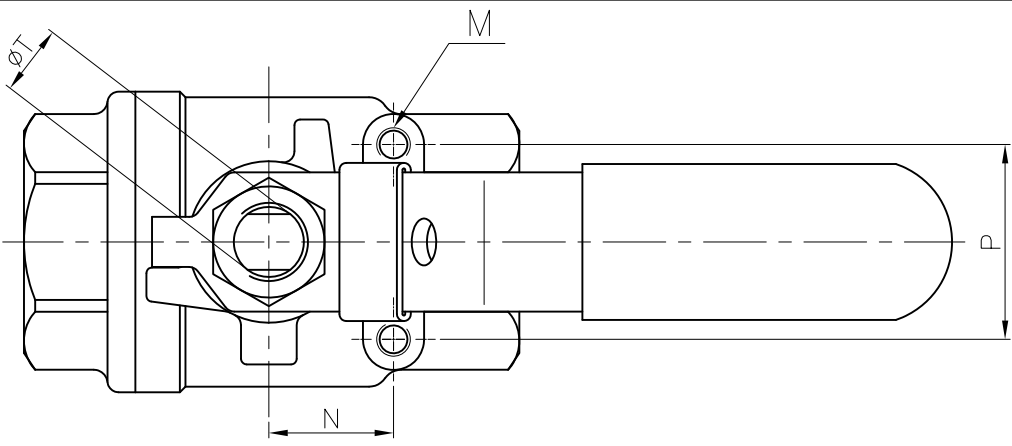


Ra	0.2	1.6	6.3	25
JIS	▽▽▽	▽▽	▽	▽
GENERAL TOLERANCE	±0.1	±0.2	±0.3	±0.5
	0.5~5	6~30	31~120	121~320
			321~1000	±0.8

JFW INDUSTRIES, INC.  
 6731 N.E. 47TH PORTLAND, OREGON 97218 U.S.A.  
 E-mail: jfwvalve@comcast.net  
 Tel: 1 503 288 0673  
 Fax: 1 503 288 1075



DN	d	D	L	H	H1	T	W	N	P	M	Torque (N-m)	Weight (Kg)
8	11.6	19	50.8	58.5	18	3/8"-24UNF	100	12.7	28.5	M5	3.5	0.2
10	12.5	22.5	50.8	58.5	18	3/8"-24UNF	100	12.7	28.5	M5	4	0.2
15	15	26	58	58.5	18.5	3/8"-24UNF	100	12.7	28.5	M5	5.5	0.3
20	20	32	65.6	63.5	22.5	7/16"-20UNF	125	12.7	28.5	M5	7.5	0.5
25	25	38	78.7	78	25	7/16"-20UNF	149	22.4	35	M5	11	0.8
32	32	48	90	83	26	7/16"-20UNF	149	22.4	35	M6	15	1.1
40	38	54.8	105	102	30	1/2"-20UNF	190	23.2	38.1	M6	20	1.8
50	50	67	124	108	30	1/2"-20UNF	190	23.2	38.1	M6	40	2.7
65	63	85	146	138	40	3/4"-10UNF	250	29	50	M6	60	5.6
80	76	100	164	146	40	3/4"-10UNF	250	35	55	M6	85	7.5
100	100	126	240	175	43	3/4"-16UNF	300	49.5	60	M6	90	13.9

unit:mm

NPS	d	D	L	H	H1	T	W	N	P	M	Torque (In-lb)	Weight (Lb)
1/4"	0.46	0.75	2	2.3	0.71	3/8"-24UNF	3.94	0.5	1.12	3/16"	31	0.5
3/8"	0.49	0.89	2	2.3	0.71	3/8"-24UNF	3.94	0.5	1.12	3/16"	35.4	0.5
1/2"	0.59	1.02	2.28	2.3	0.73	3/8"-24UNF	3.94	0.5	1.12	3/16"	48.7	0.7
3/4"	0.79	1.26	2.58	2.5	0.89	7/16"-20UNF	4.92	0.5	1.12	3/16"	66.4	1
1"	0.98	1.5	3.1	3.07	0.98	7/16"-20UNF	5.87	0.88	1.38	3/16"	97.4	1.7
1-1/4"	1.26	1.89	3.54	3.27	1.02	7/16"-20UNF	5.87	0.88	1.38	1/4"	132.8	2.5
1-1/2"	1.5	2.16	4.13	4.02	1.18	1/2"-20UNF	7.48	0.91	1.5	1/4"	177	3.9
2"	1.97	2.64	4.88	4.25	1.18	1/2"-20UNF	7.48	0.91	1.5	1/4"	354	5.9
2-1/2"	2.48	3.35	5.75	5.43	1.57	3/4"-10UNF	9.84	1.14	1.97	1/4"	531	12.4
3"	2.99	3.94	6.46	5.75	1.57	3/4"-10UNF	9.84	1.38	2.17	1/4"	752.3	16.5
4"	3.94	4.96	9.45	6.89	1.69	3/4"-16UNF	11.81	1.95	2.36	1/4"	796.6	30.6

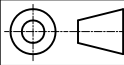
unit:in

ITEM	PARTS	MATERIAL
1	BODY	ASTM A351-CF8M
2	CAP	
3	BALL	
4	STEM	ASTM A276-316
5	GLAND	AISI 304
6	BALL SEAT	PTFE / RTFE
7	BODY SEAL	PTFE
8	PACKING	
9	THRUST WASHER	
10	SPRING WASHER	AISI 304
11	NUT	
12	HANDLE	
13	HANDLE SLEEVE	PVC
14	LOCK DEVICE	AISI 304

△			
△			
△			
Revise	Description	Date	Approve
DRAWING NO.		-12	

**JFW INDUSTRIES, INC.**

CHECK BY	DRAWING BY	DATE	SPECIFICATION	2-PC Screwed End Ball Valve 1000 WOG
	<i>Ray</i>	Apr.20.2012	MATERIAL	ASTM A351-CF8M
			PROCESS/Nr.	
			UNIT / SCALE	mm



**BV-002-E -12**